

PARTICIPATING SOCIETY PRESIDENTS

Botanical Society of America (BSA)

Allison Snow, The Ohio State University

American Society of Plant Taxonomists (ASPT)

Elizabeth A. Kellogg, University of Missouri-St. Louis



American Bryological and Lichenological Society (ABLS)

James Lawrey, George Mason University

American Fern Society (AFS)

Tom Ranker, University of Colorado

CONFERENCE PLANNING AND PROGRAM COORDINATION

BSA Program Director

Jeffrey M. Osborn

Division of Science
Truman State University
100 E. Normal Street
Kirksville, MO 63501-4221
Phone: 660-785-4017
Fax: 660-785-4045
josborn@truman.edu

BSA Local Representative

Beryl Simpson

Section of Integrative Biology
The University of Texas at Austin
Austin, Texas 78712-0253
Phone: 512-471-7335
Fax: 512-232-3402
beryl@mail.utexas.edu

BSA Meeting Manager

Johanne Stogran

2813 Blossom Ave
Columbus, OH 43231
Phone: 614-899-9356
Fax: 614-895-7866
johanne@botany.org

Botany 2005

Field Trip Co-Coordinator

Mark Bierner

2101 Paisano Rd
Austin, TX 78746
Phone: 512-329-8719
Fax: 512-330-9374
bierner@mail.utexas.edu

Botany 2005

Field Trip Co-Coordinator

Thomas Wendt

Plant Resources Center
The University of Texas at Austin
1 University Station Stop F0404
Austin, TX 78712
Phone: 512-471-5904
Fax: 512-232-3402
twendt@mail.utexas.edu

ASPT Program Director

Andrea Wolfe

Department of EEOB
318 W 12th Ave
The Ohio State University
Columbus, OH 43210-1293
Phone: 614-292-0267
Fax: 614-292-6345
wolfe.205@osu.edu

AFS Program Chair

David Conant

Department of Natural Sciences
Lyndon State College
1001 College Rd.
P.O. Box 919
Lyndonville, VT 05851-0919
Phone: 802-626-6485
Fax: 802-626-9770
david.conant@lsc.vsc.edu

ABLS Program Chair

Nancy Slack

Department of Biology
Russell Sage College
Troy, New York 12180
Phone: 518 244-2288
Fax: 518 244-3174
slacknan@aol.com

ASPT Local Representative

Robert K. Jansen

Blake Centennial Prof and Chair
The University of Texas at Austin
Integrative Biology
1 University Station C0930
Austin, Texas 78712-0253
Phone: 512-232-5661
Fax: 512-232-9529
jansen@mail.utexas.edu

AFS Local Representative

Blanca Leon

Plant Resources Center
University of Texas – Austin
Austin, TX 78712
Phone: 512/475-6159
blanca.leon@mail.utexas.edu

ABLS Local Representative

Ann Rushing

Department of Biology
Baylor University
Waco, TX 76798
Phone: 254-710-2911
ann_rushing@baylor.edu



TABLE OF CONTENTS

Austin	4
Getting to Austin	5
General Meeting Information	6
Housing Options	9
The Forum on Botanical Education and Outreach	10
Keynote Address	11
Plenary Address.....	12
Symposia, Colloquia and Addresses	13
<i>Annals of Botany</i> Special Lecture	14
Field Trips	15
Workshops.....	22
Local Tours	25
Ticketed Society Events	26
Student Opportunities	27
Application to serve as a Student Projectionist	28
Registration Form.....	29
Conference Overview At-A-Glance	Inside Back Cover

CONFERENCE OVERVIEW

The annual Botany Conference brings together a broad spectrum of researchers, professors, educators, and motivated students, all focused on what's new and vibrant in the diverse field of plant biology. Botany 2005 promises to be one of the most successful in the series. This is the annual conference of four leading professional societies, the Botanical Society of America, the American Bryological and Lichenological Society, the American Society of Plant Taxonomists, and the American Fern Society.

An anticipated 700 participants will present approximately 500 scientific contributions, including 7 symposia, papers, posters, and special lectures. A full slate of field trips and scientific workshops and social events will round out the program.

Botany 2005 will be held at the Austin Hilton, a new hotel that has a enough meeting space for the entire program. An Exhibit Hall will be located in a plush ballroom, and will be the center of social activities including conference-wide breaks and poster session for the meeting.

Saturday, August 13, will feature the 4th Educational and Outreach Forum. This successful component of the Botany conference is designed to draw an audience of educators and researchers involved in the teaching of biology and plant science on many levels, from kindergarten through college. The day will include a range of interesting discussion sessions, a keynote lecture by Barbara Schulz, Teacher Leader for the National Academy of Science, Center for Education, and will conclude with a reception, which will give attendees the opportunity to discuss and network in a social setting. For the first time, participating teachers will be able to apply for Texas Continuing Professional Education Credits for attending Forum sessions and activities.

Sunday, August 14, will be an active day of FREE workshops and fieldtrips. Sunday evening will open the scientific meeting with the conference-wide Plenary Lecture by Dr. José Sarukhán, a past president of the Mexican Botanical Society and a foreign member of the U.S. National Academy of Sciences and the Royal Society of London. His lecture will be followed by an All-Society Mixer.

Monday morning, August 15, kicks off the scientific sessions and symposia. Tuesday afternoon, August 16, will feature a conference-wide Poster Session, with an expected 200 posters featuring current research and recent topics. Scientific Sessions will conclude on Wednesday August 17. Participating Societies will also hold social events and meetings through out the week.

Please visit the conference website for complete meeting information and full details about the scientific and educational programs (www.botanyconference.org), as well as the inside the back cover of this booklet for a conference overview.



AUSTIN, TEXAS

Known for its casual and playful nature, Austin is the playground of Texas. Situated at the center of the Lone Star State, it stands as the gateway to the Texas Hill Country and the Highland Lakes. As the state capital and home to the University of Texas, the city supports a politically charged and culturally rich environment. It's hip, trendy, and high-tech. A large creative population—primarily musicians and artists—enhance its eclectic nature.

With a temperate year-round climate and 300 days of sunshine a year, Austin lives for the outdoors. Nature trails, parks, and wilderness preserves create an oasis in the heart of the city. Town Lake bisects the center of downtown and is bordered by 10 miles of hike-and-bike trails where devoted joggers, walkers, and cyclists flock every hour of the day.

Outdoor enthusiasts will find Austin blessed with parks and nature preserves aplenty. Best known is Zilker Park in the center of the city. In addition to Barton Springs and various trails, the 400-acre lakeside refuge boasts soccer fields, a children's playground, Zilker Botanical Gardens, The Austin Nature & Science Center, and a miniature train popular with the kids. Throughout the city and surrounding hills, dozens of lakeside and creekside parks appeal to diverse tastes.



State Capital



Texas State History Museum

Ecologically minded Austinites are understandably proud of such Hill Country jewels as Wild Basin Wilderness Preserve and Mayfield Park & Preserve.

Originally a buffalo hunting ground favored by Tonkawa Indians, Austin was permanently settled in 1838 as a trading post. Now, more than a million people live in the city named for Stephen F. Austin, who colonized Texas.

The Texas State Capitol, an imposing pink granite structure, commands a stately presence in downtown. Actually 14 feet taller than the nation's capitol, the Texas Statehouse is the largest domed statehouse in the country.

Texas' larger-than-life history comes together under one roof at the new Bob Bullock Texas State History Museum, which features intriguing artifacts, interactive exhibits, multi-media shows, and an IMAX Theatre.

Austin is one of only a few U.S. cities with professional ballet, symphony, opera, and theater companies. With 20 museums, dozens of galleries, and as many as 35 theater companies, the city is experiencing a cultural renaissance.

Many of the city's cultural resources are found on the campus of the University of Texas, where the Blanton Museum of Art opens a new facility in 2005 and the Harry Ransom Center completed a renovation in early 2003.

The Lyndon B. Johnson Library and Museum, also located on campus, remains the most visited of the nation's presidential libraries. A scale replica of the Oval Office, artifacts from Air Force One, and volumes of official papers chronicle the rise of a young man from Central Texas who would be president.



Lyndon B. Johnson Library



From April through October, 1.5 million Mexican free-tail bats live under the Congress Avenue Bridge that spans Town Lake. Onlookers flock to the shores nightly to watch the nocturnal creatures emerging from beneath the bridge.



AUSTIN'S MUSIC SCENE

In the city where the music never stops, live music plays at more than 100 venues on any given evening. A little blues, a little country, the beat of rock and roll, and even a few jazz licks puts Austin music into a distinctive music genre that's difficult to label. The largest concentration of music venues is found downtown in the Warehouse District and along Sixth Street, a six-block stretch of bars and restaurants, within walking distance of the Austin Hilton.

Once known mostly for its country and blues music, today Austin's music scene is as diverse as its ever-growing population. The state's capital is a cradle of musical talent for those like Stevie Ray Vaughan and the late Janis Joplin, as well as that of living legends and Austin residents Willie Nelson, The Dixie Chicks, and Asleep at the Wheel's Ray Benson.



GETTING TO AUSTIN

Airlines

Austin is served by the Austin-Bergstrom International Airport located at 3600 Presidential Blvd.; Austin, Texas 78719. Airport code is AUS, and is about 7 miles from the Austin Hilton.

Passenger Airlines and Cities Served

- America West, Reservations and Tickets: 1-800-235-9292
- American Airlines, Reservations and Tickets: 1-800-433-7300
- American Airlines, Austin Business Office: 512-530-6100
- Continental Airlines, Reservations and Tickets: 1-800-525-0280
- Delta, Reservations and Tickets: 1-800-221-1212
- Frontier Airlines, Reservations and Tickets: 1-800-432-1359
- Northwest, Reservations and Tickets: 1-800-225-2525
- Southwest, Reservations and Tickets: 1-800-435-9792
- United, Reservations and Tickets: 1-800-241-6522



Airport Shuttles

A shuttle system is available from the airport to the Austin Hilton via Super Shuttle.

Approximate cost is \$11.00 per person for a one-way trip. Call for reservations at: 1-800-258-3826 or online at www.supershuttle.com



By Car



Botany 2005 has arranged with Avis Rent A Car for discounted car rental for conference attendees. Make arrangements by calling 1-800-331-1600 and using our Avis Worldwide Discount number: J955218.

By Bus

Check economical travel by bus to Austin by calling (512) 458-4463, or online at www.greyhound.com

The station is located at:

916 E Koenig Lane
Austin, TX 78751

By Train

Check www.amtrak.com for fares and schedules to get to Austin.

The station is located at:

250 North Lamar Blvd.
Austin, TX 78703



GENERAL MEETING INFORMATION

Registration

Full instructions on how to register by mail, fax, or on-line are provided:

- 1) in this brochure,
- 2) as a form available for downloading at the Botany 2005 website (www.2005.botanyconference.org)
- 3) on-line registration site, also accessible from the BOTANY 2005 website.

A confirmation of your registration will be e-mailed to you within 7 business days of receipt. Tickets for events, a copy of the Final Program, book of Abstracts, and an official name badge will be included in your packet of registration materials available at the Registration Area at the conference.

PLEASE BRING THE REGISTRATION CONFIRMATION NOTICE WITH YOU TO THE CONFERENCE

This year's annual meeting will once again include a special Forum to be held in conjunction with the scientific meeting. The Forum will begin on Friday evening with early registration and a light reception, then continue on Saturday with a Keynote lecture and a series of concurrent sessions. Saturday evening will conclude with a reception. Sunday continues with hands-on workshops presented as two-hour, half-day or full-day events. Please see the Workshop section of this brochure for a full discussion of topics, leaders, logistics, special notes. All Workshops are FREE!

Registration options are available for those who wish to attend the Forum only, the Scientific Meeting only, or the Full Conference.

Scientific meeting registration fees cover four days of the meeting, including Workshops, the Plenary Lecture, the All-Society Mixer, all Scientific Sessions, Poster Displays, and the Exhibition Hall. An official name badge will be required for admission to all Scientific Sessions and the Exhibition Hall.

Registration fees must be paid to obtain the official name badge.

On-site registration, pickup of registration packets for those who have pre-registered, and late purchase of social event tickets can be done at the Registration Area, if still available.

Registration Payment

Checks and credit cards are the only acceptable forms of payment for registration. Wire transfers and purchase orders are not accepted.

Registration Area

Times of Operation

Friday	August 12.....	6:00 pm to 9:00 pm
Saturday.....	August 13.....	8:00 am to 6:00 pm
Sunday	August 14.....	8:00 am to 6:00 pm
Monday.....	August 15.....	7:30 am to 5:00 pm
Tuesday.....	August 16.....	7:30 am to 5:00 pm
Wednesday.....	August 17.....	7:30 am to 12:00 pm

Special Services

If you require special accommodations, assistance, or services during Botany 2005, please check the box provided on the registration form and a Botany 2005 representative will contact you.

Child Care

Child care can be arranged by directly calling the Austin Hilton. Attendees are completely responsible for making their own arrangements with the provider. Botany 2005 assumes no responsibility for any difficulties or consequences arising from the use of a child care provider and recommends that the provider be screened carefully.

Coffee Breaks

Complimentary coffee breaks will be held in the Exhibit Hall at specific times each day. Check the Final Program for times.

Federal Tax ID Number

The Federal Tax ID number for the Botanical Society of America is: 62-0671591.

Refund and Cancellation Policy

Requests for registration fee refunds will be honored if received in writing before July 9, 2005.

Botany 2005 Registration
2813 Blossom Ave
Columbus, OH 43231

Registration fee refunds will be subject to a \$50 processing fee. Fieldtrips and Local Tour, Social Event, and Workshop fees are non-refundable if cancelled after July 9th.

Full fee refunds will be granted for Social Events, Scientific Field Trips, Local Tours, and Workshops if they exceed maximum enrollment, do not meet minimum enrollment, or if cancelled for any reason.

ALL refunds will be issued **AFTER** the conference.

All-Society Mixer

All registrants are invited to a welcoming mixer on Sunday, August 14th from 8:30 pm to 10:00 pm following the Plenary Lecture. A cash bar and complimentary soft drinks and snacks will be available.

Final Program and Abstracts

The final Program and book of Abstracts will be distributed along with registration materials on-site at the registration desk. The Program and Abstracts will be searchable on the Botany 2005 website (www.botanyconference.org) prior to the conference.

Society & Association Ticketed Events

A listing of society and group events requiring tickets are printed in this brochure. To purchase tickets for those requiring paid admission, please check the appropriate box on the registration form and add the cost to your other fees. For those who pre-register, event tickets will be included in your registration packet, which will be distributed on-site at the Registration Desk. A limited number of tickets may be available for purchase at the Registration Desk on-site at the meeting, but availability is not guaranteed.

Internet Café

Internet accessibility will be available in the Internet Cafe, which will be in the Hilton, at a location to be announced. The Internet Cafe will be in operation from 8:00 am to 5:00 pm on Monday through Wednesday, August 15-17.

Workshops

A series of FREE workshops are scheduled for Sunday, August 14th. Please bring your "registration confirmation notice" so that you have a record of your ticket. Please refer to the workshop descriptions in this brochure for full discussion of workshop topics, leaders, logistics, and special notes,

Field Trips

A series of Scientific Fieldtrips are scheduled before, during, and after the scientific program from Saturday, August 13, to Thursday, August 18th. Fieldtrips are ticketed events; tickets may be purchased during registration. If you participate in a field trip before you pick up your registration packet, please bring your "registration confirmation notice" so that you have a record of your purchased ticket. Please refer to the Scientific Field Trip descriptions in this brochure for full discussion of trip destinations, trip leaders, logistics, special notes, and expected expenses. A limited number of tickets may be available for purchase at the Registration Desk on-site at the meeting, but availability is not guaranteed.

Companion/Local Tours

Companion/Local Tours have been arranged to take place during the meeting. Local tours are ticketed events; tickets may be purchased during registration. For those who pre-register, tickets will be included in the registration packet, which will be distributed on-site at the Registration Area. Please refer to the Local Tour descriptions in this brochure for a full discussion of destinations and activities. A limited number of tickets may be available for purchase at the Registration Desk on-site at the meeting, but availability is not guaranteed.

Transportation for all Field trips and Local Tours departs from and returns to the main Lobby of the Hilton.

Student Projectionists

Students who work up to 10 hours (2-3 sessions) as a projectionist can have their early student registration fees refunded. Experience with 35mm slide, overhead, and LCD projectors is desirable, but not necessary. In return for successfully serving as a projectionist for all assigned sessions during the meeting, the early student registration fee equivalent will be refunded. Fee waivers are not granted. Student projectionists must register for the meeting and pay the registration fees.

A mandatory training session will be held on Sunday, August 13th. Specific location to be announced.

If you are interested in serving as a student projectionist, please fill out the enclosed "Application to Serve as a Student Audio-Visual Projectionist". Please submit your application by July 15th, 2005.

Exhibits

Be sure to visit the outstanding array of commercial and scientific exhibits offered. The tentative schedule for the Exhibit Hall is:

Saturday.....	August 13.....	2:00 pm to 7:00 pm
Sunday.....	August 14.....	12:00 pm to 5:00 pm
Monday.....	August 15.....	9:00 am to 6:00 pm
Tuesday.....	August 16.....	9:00 am to 6:00 pm
Wednesday.....	August 17.....	9:00 am to 6:00 pm

Posters and Poster Session

Posters will be on display for the duration of the meeting in the Exhibit Hall from 9:00 am to 6:00 pm Monday through Wednesday. Regular submission posters will fit onto bulletin Boards that are 4' tall and 8' wide. Recent topics posters will fit onto bulletin boards that are 4' tall and 4' wide. Materials may be secured with push pins, which will be provided.

Poster set-up time is Sunday, August 14, from 12:00 pm to 5:00 pm. Poster take-down time is Wednesday, August 17, from 2:00 pm to 6:00 pm. Poster Session for all societies will occur at the same time on Tuesday, August 16th from 12:30 pm to 2:00 pm.

Neither the Hilton management, nor Botany 2005 management, are responsible for any poster materials remaining after 5:00 pm on Wednesday, August 17th.

Contributed Papers and Symposium Sessions

All Contributed Paper and Symposium sessions will be held in Hilton meeting rooms, and audio amplification equipment will be provided in all rooms as needed. LCD projectors and computer stations will be available as standard presentation options. Computers will support Windows XP, Microsoft PowerPoint presentations. 35mm slide projectors and overhead projectors will NOT be standard, but will be available as needed.

GENERAL MEETING INFORMATION

AUDIO-VISUAL INFORMATION

Botany 2005 will provide the opportunity for presenters to deliver computer-based presentations as a standard presentation option.

The Pentium III computers that will be provided use Windows XP Pro and Office XP 2003 suite including PowerPoint. The PowerPoint application will handle older versions as well as Macintosh saved as a 2003 or earlier version file. Be sure and double check your presentation for accuracy as PowerPoint sometimes does not always cross over between Windows and Macintosh based computers.

For computer presentations, files should be saved on CD ROMs. A centralized network will also be available.

For specific technical questions regarding your presentation, please consult the Botany 2005 website, www.2005.botanyconference.org, for complete information.

ROOMMATE MATCHING SERVICE

Need help finding someone to share expenses?

Botany 2005 will maintain a list of registrants who have submitted their names and indicated an interest in sharing a room during the conference. Botany 2005 is not responsible for assigning roommates.

Registrants are responsible for contacting individuals on a password-protected list and for making their own arrangements.

To be included on the list, please submit your name, e-mail address and pertinent information on the "Room Sharing Service" link on the conference website (www.2005.botanyconference.org).

Only one roommate should make the reservations, and it is recommended that you make your reservations early. Botany 2005 will assume NO responsibility for any difficulties arising from a shared room and recommends that all potential roommates be screened carefully.



ESPECIALLY FOR TEACHERS

The Botany 2005 Educational Forum, August 13 & 14 is the place to be!

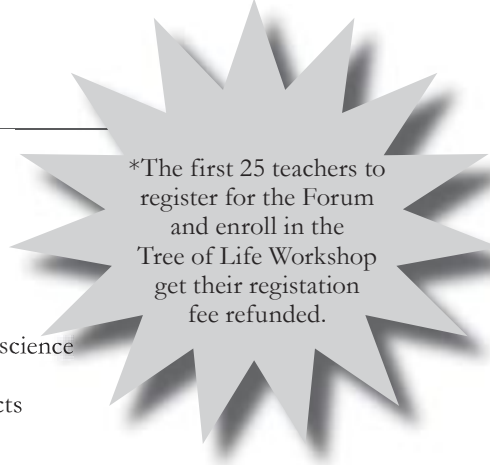
Interested in new ways to teach science through the use of plants in the classroom?
Would you like to earn 15 Continuing Professional Education credits while doing so?
Join us, network and become involved with science at the National Level!

Informative Sessions and FREE hands-on workshops planned especially for your interest:

- outlining the BSA Sci- π project and how you can become involved in an online science mentoring program supporting "Scientific Inquiry through Plants"
- discussing innovative ideas for using plants modeled in the Boston School districts
- explaining how you can become involved in a Texas restoration project
- using the "Origin of Species" to teach evolution
- sharing experiences of working with K-12 School Districts to put plants in the science curriculum
- engaging in opportunities for Outdoor Teaching and Learning in Texas for the K-12 classroom
- developing School-University partnerships
- learning about Digital Imaging in the teaching laboratory

Complimentary Hands-On Workshops - skills you can adapt to your own Classroom

- Keep Your Biology Class Alive with Fast Plants
- Activities & Ambassadors: Using Living Collections to Teach Schoolchildren through Field Trips
- Teaching Through Inquiry
- Implementing a Cooperative Group Learning Environment in Hands-On Biology Labs for Non-majors: Lessons from the Trenches
- BSA Sci- π : Seeds of Change in the Classroom
- C-Ferns in the Classroom
- Building the Tree of Life Workshop - attend for FREE*



*The first 25 teachers to register for the Forum and enroll in the Tree of Life Workshop get their registration fee refunded.

WHERE TO STAY AT BOTANY 2005

Blocks of rooms have been reserved at the two hotels listed below, as well as in a private dormitory on the University of Texas Campus. Please plan to stay at the host hotel as this helps to keep the meeting costs down. You may make your own hotel reservations directly with the hotels using the information provided and be sure to mention Botany 2005 to get the conference rate. Make Dobie Center reservations through Botany 2005. Full payment for dorms stay is due with conference registration

Austin Hilton

500 East 4th Street
Austin, Texas 78701
Phone: (512) 482-8000
www.hilton.com



The Hilton Austin hotel is located in downtown Austin, one block from Sixth Street entertainment and within walking distance from the Warehouse Entertainment district, and is the only hotel in Austin across the street from the Austin Convention Center. It is also convenient for such attractions as the Capitol Building, Bob Bullock Texas Historical Museum and the LBJ Presidential Library. Only seven miles or ten minutes from the Austin Bergstrom International Airport, the property features 800 rooms, each equipped with a spacious work desk with two phones (each with 2 lines), voicemail, and a data port offering Wireless High Speed Internet Service.



Rates: Single - \$112.00
Double - \$132.00
Triple/Quad - \$152.00

The Hilton is the host hotel for the meeting, all events, social and scientific. Please consider staying at the Hilton as our room block is very important in keeping the meeting as economical as possible.

The Dobie Center Dorms

2021 Guadalupe
Austin, Texas 78705
(512) 505-1000
www.dobiecenter.com



Botany 2005 has contracted with a private residence hall for primarily student housing at the conference. Dobie is located on the edge of the University of Texas - Austin campus and is about 2 miles away from the Hilton. Public transportation is available from the Hall to the Hilton. Check online at www.capmetro.org for the best route and times to fit your schedule.

Reservations can only be made through the Botany 2005 website. Linens are included as well as a breakfast buffet.

Rates: Single - \$45.00 per person
Double - \$36.80 per person

Hampton Inn and Suites

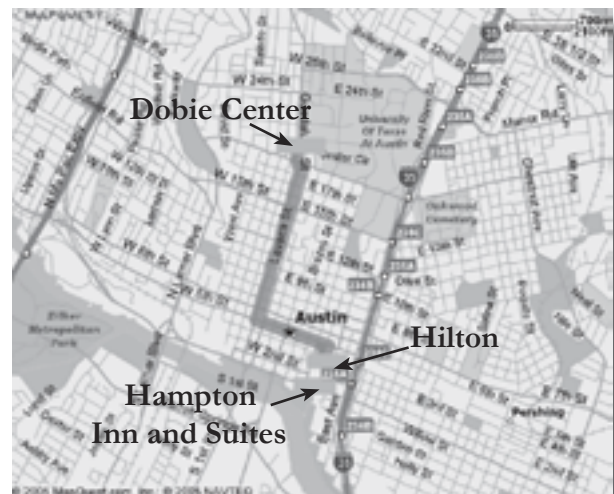
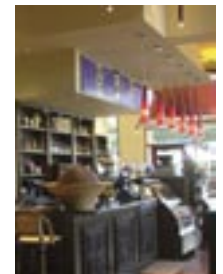
200 San Jacinto
Austin, Texas 78701
Phone: (512) 472-1500
www.hamptoninn.com



Hampton Inn is the nation's leading chain of quality, value-priced hotels. Here you'll find clean, fresh, comfortable rooms standard with a coffee maker, iron and ironing board, data port, and free in-room movie channel. Enjoy free local calls and no surcharge for using a calling card, free breakfast bar, complimentary copies of USA Today Monday through Friday, free coffee and tea in the lobby 24 hours a day, and 24-hour front desk, message and fax service.

The Hampton Inn is within walking distance to the Hilton, about 4 blocks.

Rates: Single - \$105.00
Double - \$125.00
Triple/Quad - \$145.00



Map is approximate - please confirm your own directions